

RIVARA

BEESLEY

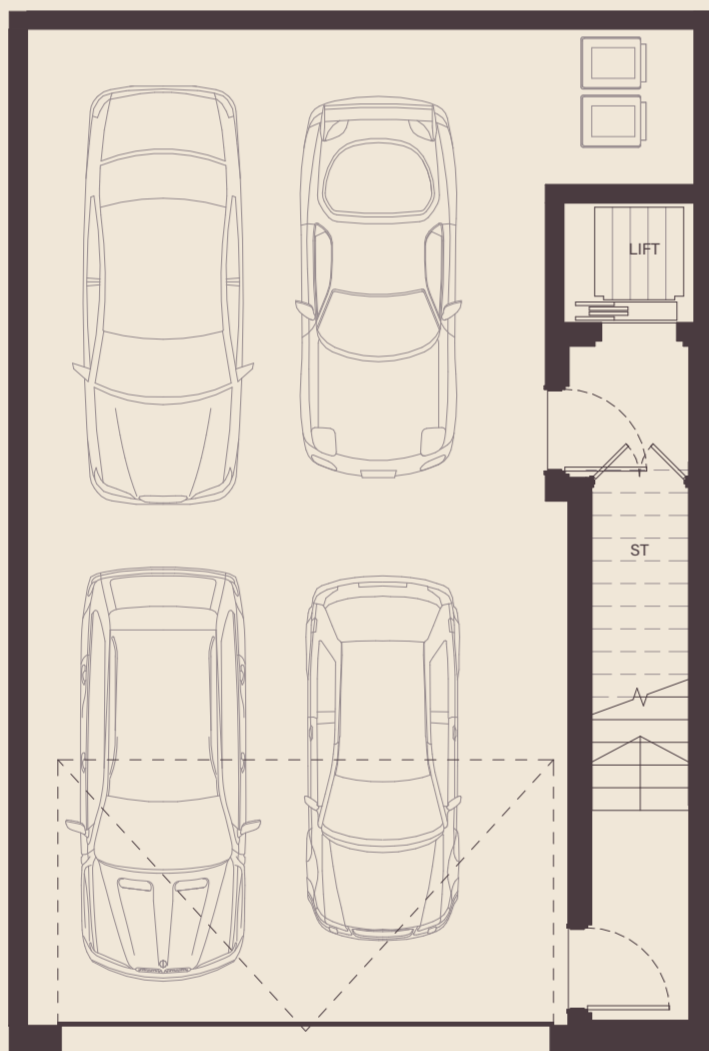
Three

River Home Collection

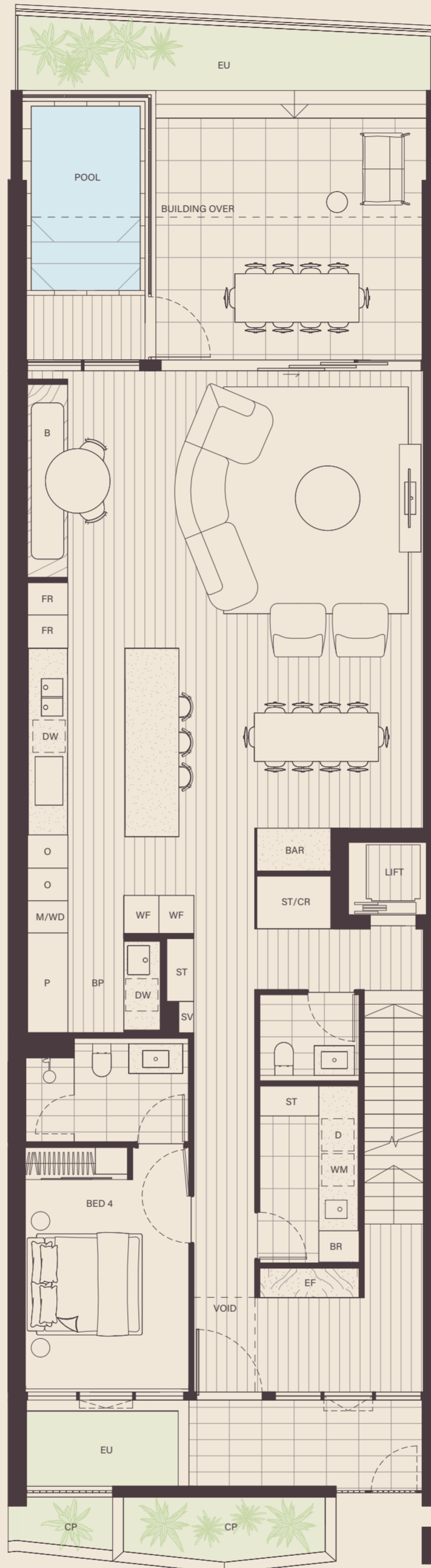


Artist impression

River Home
Three



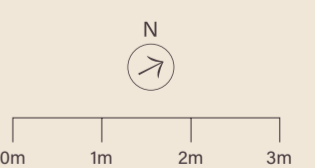
GARAGE



GROUND FLOOR



LEVEL 2



| | | | |
|----------|-------------------|---|---|
| 4 | 4.5 | 2 | 4 |
| Internal | 373m ² | | |
| External | 81m ² | | |
| Total | 454m ² | | |

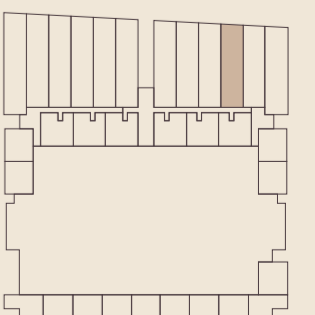
LEGEND

| | |
|-----|-----------------|
| B | Banquette |
| BAR | Dry Bar |
| BP | Butler's Pantry |
| BR | Broom Cupboard |
| CP | Common Property |
| D | Dryer |

| | |
|----|-----------------------------|
| DW | Dishwasher |
| EF | Entry Feature |
| EU | Exclusive Use Landscaping |
| FR | Integrated Fridge / Freezer |
| ID | Island Dresser |
| M | Microwave |

| | |
|----|-----------------|
| O | Oven |
| OS | Operable Screen |
| P | Pantry |
| PS | Privacy Screen |
| ST | Storage |
| SV | Services/ Comms |

| | |
|----|-----------------|
| WD | Warming Drawer |
| WF | Wine Fridge |
| WM | Washing Machine |
| CR | Coat Rack |



*Disclaimer: Please note that the layout plan was produced prior to construction. The information is believed to be correct but is not guaranteed. Changes may be made during construction and dimensions, areas, fittings, finishes, and specification are subject to change without notice in accordance with the provisions of the contract for sale. The furniture and furnishings depicted are not included with any sale and purchasers must refer to their contract for sale for the list of inclusions. The position of the furniture and furnishings should not be taken to be indicative of final positions of power points, TV connection points and the like. Prospective purchasers must rely on their own enquiries. All graphics including tile layout and balustrades and the like are indicative only. Bulkheads for services are not depicted. The layout plan is at an unspecified scale.

